









Sample image

Datasheet

Article number: 70001182
Designation: C32.A410.GK1
Description: Switch

IEC 60947-3 EN 60947-3, VDE 0660 Teil 107						
Märkdriftspänning Ui						
<i>Spänning (V) AC / DC</i>						
690 AC						
Märkdriftström vid konstant drift						
<i>Ström (A)</i>	<i>Omgivningstemperatur (°C)</i>	<i>Temperatur topp (°C) ytterligare krav</i>				
50	55	60 Omgivningstemperatur +55°C under 24 timmar med toppar upp till +60°C				
Märkdriftström Ie						
<i>Urvals kriterie</i>						
			<i>Spänning (V)</i>		<i>Ström (A)</i>	
AC-15			220 - 240		16	
AC-15			380 - 440		7	
Märkdrifteffekt						
<i>Urvals kriterie</i>						
		<i>Spänning (V)</i>	<i>No. of phases</i>	<i>No. of poles</i>	<i>Effekt (kW)</i>	
AC-3		220 - 240	3	3	7,50	
AC-3		380 - 440	3	3	15	
AC-3		660 - 690	3	3	15	
AC-3		220 - 240	1	2	5,50	
AC-3		380 - 440	1	2	7,50	
AC-23A		220 - 240	3	3	11	
AC-23A		380 - 440	3	3	22	
AC-23A		660 - 690	3	3	22	
AC-23A		220 - 240	1	2	5,50	
AC-23A		380 - 440	1	2	11	
Max försäkring, IEC						
<i>Säkringskarakteristik</i>						
				<i>Antal säkringar</i>	<i>Ström (A)</i>	
gG				1	63	
UL60947-4-1 , UL508						
Nominal Voltage						
<i>Spänning (V) AC / DC</i>						
600 AC						
Märkdriftspänning Ui						
<i>Spänning (V) AC / DC</i>						
600 AC						
Rated thermal current						
		<i>Ström (A)</i>	<i>Omgivningstemperatur (°C) Additional Text</i>			
		50	0 - 40 --			
Horsepower rating						
<i>Across-the-Line Motor Starting</i>						
		<i>Spänning (V)</i>	<i>No. of phases</i>	<i>No. of poles</i>	<i>Power (HP)</i>	<i>Ambient temperature [°C]</i>
Reversing		110 - 120	1	2	1,50	40
Reversing		220 - 240	1	2	3	40
Reversing		277 - 277	1	2	3	40
Reversing		415 - 415	1	2	5	40
Reversing		440 - 480	1	2	5	40
Reversing		550 - 600	1	2	7,50	40
Reversing		110 - 120	3	3	3	40
Reversing		220 - 240	3	3	5	40
Reversing		415 - 415	3	3	10	40
Reversing		440 - 480	3	3	15	40
Reversing		550 - 600	3	3	15	40
DOL		110 - 120	1	2	3	40
DOL		220 - 240	1	2	7,50	40
DOL		277 - 277	1	2	7,50	40
DOL		415 - 415	1	2	10	40
DOL		440 - 480	1	2	15	40
DOL		550 - 600	1	2	20	40
DOL		110 - 120	3	3	7,50	40
DOL		220 - 240	3	3	15	40
DOL		415 - 415	3	3	20	40
DOL		440 - 480	3	3	25	40
DOL		550 - 600	3	3	30	40

Pilot duty rating code						
Duty Code						
A600						
SCCR / Max. fuse rating						
Conditions of acceptability						
These devices are suitable for use on circuits capable of delivering not more than 5000 rms symmetrical amperes, 600V ac max. when protected by Class RK1 fuses.						
Temp. rating of wire						
Temperature rating (°C)			Ström (A) Text			
75			– Use copper wire only			
Connecting instructions						
Markings						
Break all lines.						
General Use						
AC / DC	Spänning (V)	Ström (A)	No. of phases	No. of poles	No. of contacts in series	
AC	277	50	1	1	1	
AC	600	55	1	2	1	
AC	600	55	3	3	1	
CSA						
Nominal Voltage						
			Spänning (V) AC / DC			
			600 AC			
Märkdriftspänning UI						
			Spänning (V) AC / DC			
			600 AC			
Rated thermal current						
			Ström (A)		Omgivningstemperatur (°C) Additional Text	
			50		0 - 40 –	
Horsepower rating						
Across-the-Line Motor Starting		Spänning (V)	No. of phases	No. of poles	Power (HP)	Ambient temperature [°C]
DOL		110 - 120	1	2	3	40
DOL		220 - 240	1	2	7,50	40
DOL		277 - 277	1	2	7,50	40
DOL		415 - 415	1	2	10	40
DOL		440 - 480	1	2	15	40
DOL		550 - 600	1	2	20	40
DOL		110 - 120	3	3	7,50	40
DOL		220 - 240	3	3	15	40
DOL		415 - 415	3	3	20	40
DOL		440 - 480	3	3	25	40
DOL		550 - 600	3	3	30	40
Pilot duty rating code						
Duty Code						
A600						
Temp. rating of wire						
Temperature rating (°C)			Ström (A) Text			
75			– only			
General Use						
AC / DC	Spänning (V)	Ström (A)	No. of phases	No. of poles	No. of contacts in series	
AC	277	50	2	1	1	
AC	600	50	2	2	1	
AC	600	50	3	3	1	
GENERAL TECHNICAL INFORMATION						
Size of conductor						
composition of conductor	Min. / Max. value	No. of conductor per terminal		Cross section (mm ²) or (AWG/kcmil)		Material of the wire
solid wire	Min.	1		1mm ²		Copper
solid wire	Min.	2		1mm ²		Copper
flexible wire	Min.	1		1,5mm ²		Copper
flexible wire	Max.	2		6mm ²		Copper
flexible wire	Max.	2		AWG 8		Copper
flexible wire	Min.	2		1,5mm ²		Copper
Single-core or stranded wire	Max.	2		10mm ²		Copper
Single-core or stranded wire	Max.	2		AWG 8		Copper
flexible wire with ferrule according to DIN 46228	Min.	1		1mm ²		Copper
flexible wire with ferrule according to DIN 46228	Max.	2		6mm ²		Copper
flexible wire with ferrule according to DIN 46228	Min.	2		1mm ²		Copper
Stripping length						
			Length (mm) –			
						
Rekomenderad skruvmejsel						
Typ av skruvmejsel			Value			
Stjärskruvmejsel			PH2			
Slot screwdriver according to DIN 5264			1,2x8			
Tightening torque of screws						
			tightening torque (Nm)		tightening torque (lb-in)	
			2,20		19,50	
Approbations						
Specification						Marking
EAC						


Approbations	
Specification	Marking
CE marking	
UK Directives	
CSA C.22.2 No.14	
GB/T14048.3	

General Information


Text

- Smörjning och behandling av kontakterna är förbjuden.
- Inkoppling och service av strömställaren får endast utföras av behörig personal. Strömställaren är underhållsfri.
- Använd endast kopparkabel. Kabeln får inte förtennas.
- Alla anslutningsskruvar måste dras med rekommenderat moment, även de som inte används då det kan finnas interna överkopplingar.
- Använd endast isolerade kabelskor.
- Vid installation av strömställaren skall kontrolleras att kryp- och luftavstånd motsvarar gällande föreskrifter.

Waste Electrical & Electronic Equipment (WEEE)

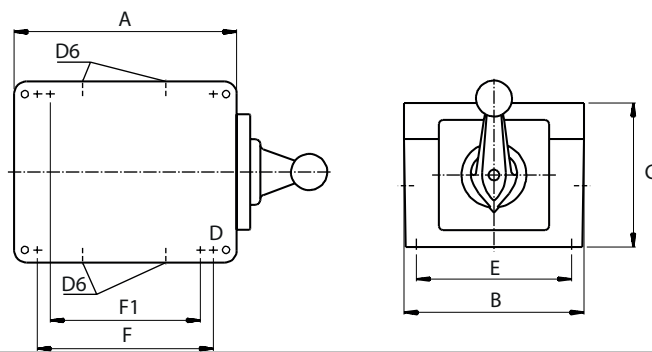
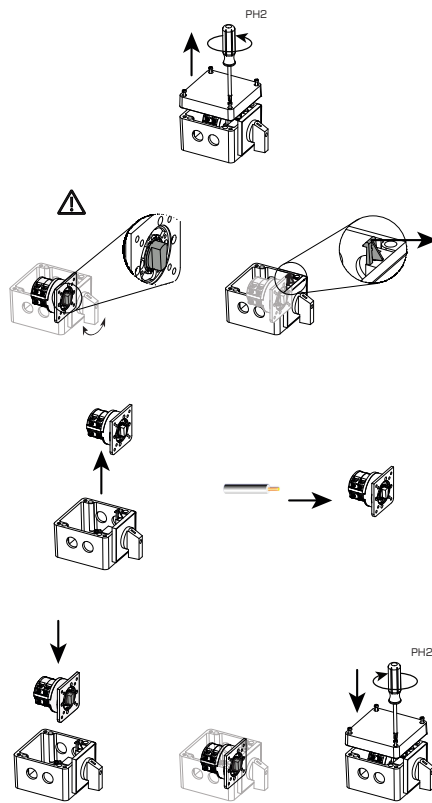
Picture name	Description
	Do not throw in the trash as care must be taken to ensure environmentally sound disposal and recycling. Please either use an environmentally friendly waste disposal company; return to the supplier for disposal; or return direct to the manufacturer, Kraus & Naimer. You can find local Kraus & Naimer offices at www.krausnaimer.com

Proposition 65

Picture name	Description
	WARNING: This product can expose you to chemicals including nickel and lead, which is known to the State of California to cause cancer. For more information go to www.P65Warnings.ca.gov .

Classification Contact: Rigid contact bridge
Classification Contact Mat: Silver
Classification Terminal: Screw terminal

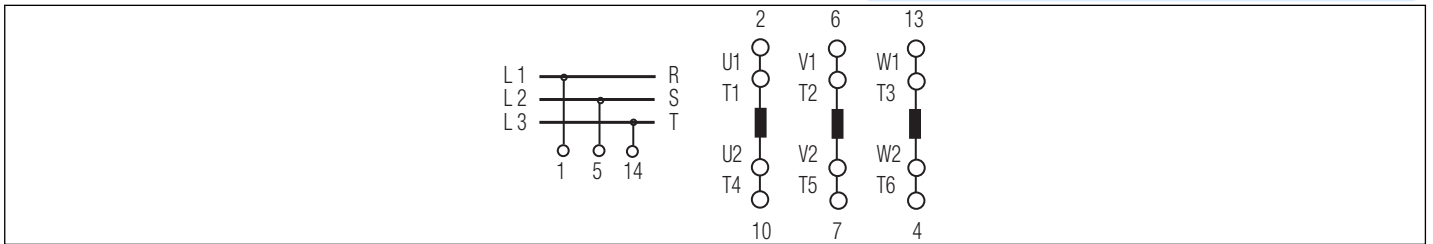
Mounting-GK1



Skyddsklass frontpanel, IP	IP65
Stages	3,00 - 4,00
A	H 140,00 mm
B	H 140,00 mm
C	H 90,00 mm
D	Ø 7,00 mm
D6	Ø 4,00 x M25
E	H 120,00 mm
F	H 93,00 mm


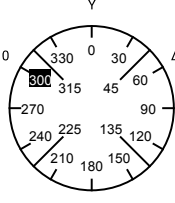
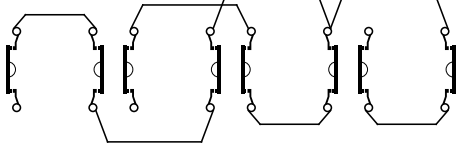
Wiring diagram

C32.A410.GK1



Switch program

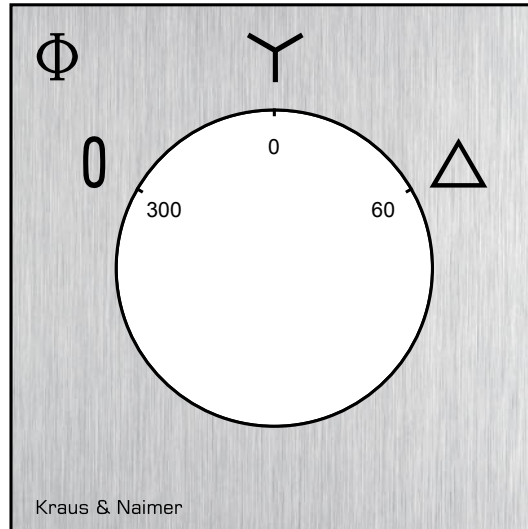
C32.A410.GK1

 Kraus & Naimer		C32				A410				Page 1 of 1			
		1	3	5	7	9	11	13	15	17	19	21	23
Face Plate 													
Switching Angle <input type="text" value="60"/> Total switching Angle <input type="text" value="120"/>		2	4	6	8	10	12	14	16	18	20	22	24
0													
315													
330													
345													
Y													
0													
15													
30													
45													
Δ													
60													
75													
90													
105													
120													
135													
150													
165													
180													
195													
210													
225													
240													
255													
270													
285													

Version: 56

Face plate

S1.F080/A1B.PEL



HANDLES

Designation: S1B.G251
Handle colour: "1" black

